

NEWSLETTER



Q&A with Joanna Patcha

MBA, MSW, LCSWA, Director of Behavioral Health at the Center for Community Transitions in Charlotte, North Carolina



Joanna Patcha, MBA, MSW, LCSWA, Director of Behavioral Health at the Center for Community Transitions in Charlotte, North Carolina

Your work helps formerly incarcerated individuals transition into society, providing therapy and support to these individuals and their families. Tell us about what called you to this work, including your journey from a corporate environment to the Center for Community Transitions (CCT).

I've always had a heart for social justice. I was privileged enough to work in the corporate world part time when I took a class through an organization called Just Faith. Through that experience, I found an inner calling. The course pushed me outside my comfort zone. We learned about the criminal justice system and the cycle of how people end up there. We had lunch with the women who reside at CCT, a 30-bed transitional facility in Charlotte, and I thought, "This is me. This is my neighbor, my mom, my grandmom."

[Keep Reading](#)

Underlying Causes of MOUD Diversion in Jails: **STRATEGIES AND SOLUTIONS**

Underlying Causes of MOUD Diversion in Jails: Strategies and Solutions

Medications for opioid use disorder (MOUD) are the leading evidence-based treatment for opioid use disorder (OUD). Abundant research shows that MOUD reduces the risk of recurrence of opioid use, involvement with the justice system, and death, both in the community and in jails.

[Read More](#)

Little Scandinavia Prison Unit: A Humane Approach to Detention



Little Scandinavia Prison Unit: A Humane Approach to Detention

Imagine a prison where the people who are incarcerated are "residents" who live communally in single cells with desks and small refrigerators and have access to a shared kitchen. Welcome to State Correctional Institution (SCI) Chester's Little Scandinavia Prison Unit, an innovative program at a medium-security prison outside Philadelphia, Pennsylvania. The Unit is modeled after prisons in Scandinavia, where the core values are safety, transparency, and innovation, with a focus on normality and reintegration into the community upon release.

[See Full Article](#)

Available Grants

[Certified Community Behavioral Health Clinic Planning, Development, and Implementation Grant](#)

Application Due Date: May 22, 2023

[Certified Community Behavioral Health Clinic Improvement and Advancement Grant](#)

Application Due Date: May 22, 2023

[Strategic Prevention Framework – Partnerships for Success for Communities, Local Governments, Universities, Colleges, and Tribes/Tribal Organizations](#)

Application Due Date: June 5, 2023

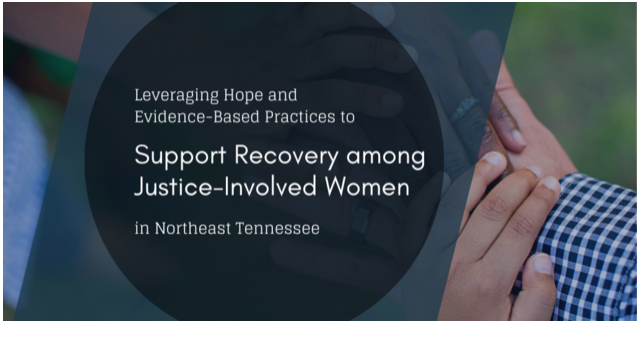
Flashback on Service Considerations for Women



[GAINS Webinar: Supporting Women's Reentry](#) | August 2021



[After Incarceration: A Guide to Helping Women Reenter the Community](#) | April 2020



[Leveraging Hope and Evidence-Based Practices to Support Recovery among Justice-Involved Women](#) | September 2020



[Benevolence Farm: Helping Formerly Incarcerated Women Heal and Move Forward](#) | July 2022



SAMHSA's GAINS Center for Behavioral Health and Justice Transformation is funded by the Substance Abuse and Mental Health Services Administration.

SAMHSA

5600 Fishers Ln | Rockville, MD | 20857 US

Disclaimer: SAMHSA's GAINS Center for Behavioral Health and Justice Transformation develops and distributes this Newsletter with support from SAMHSA. Its contents are solely the responsibility of the authors and do not necessarily represent the official view of SAMHSA.

Share this email:



[Manage](#) your preferences | [Opt out](#) using TrueRemove®
Got this as a forward? [Sign up](#) to receive our future emails.
View this email [online](#).

SAMHSA 5600 Fishers Ln
Rockville, MD 20857 | US

This email was sent to .