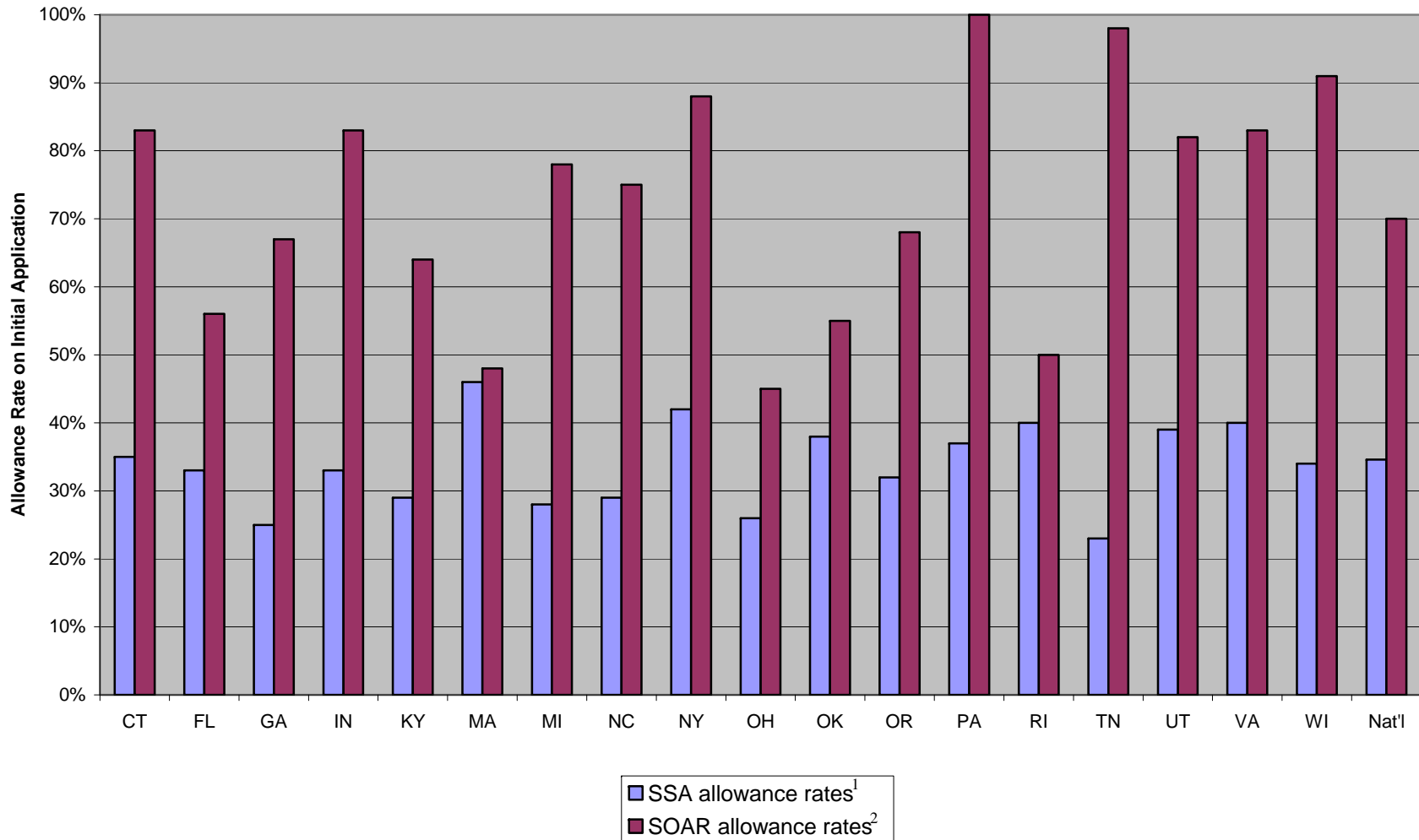


Comparison of SOAR and SSA Allowance Rates on Initial Applications



¹ Social Security Administration, Office of Disability Programs (March 2008) FY2007 SOAR -- Fiscal Year 2007 Initial Disability Claims (Initial application decisions for all applicants).

² See Policy Research Associates, Inc. (May 2008) SOAR National Outcomes Data -- May 2008 (Initial application decisions for applicants who are homeless) <http://www.prainc.com/SOAR/soar101/SOAROutcomes.pdf>